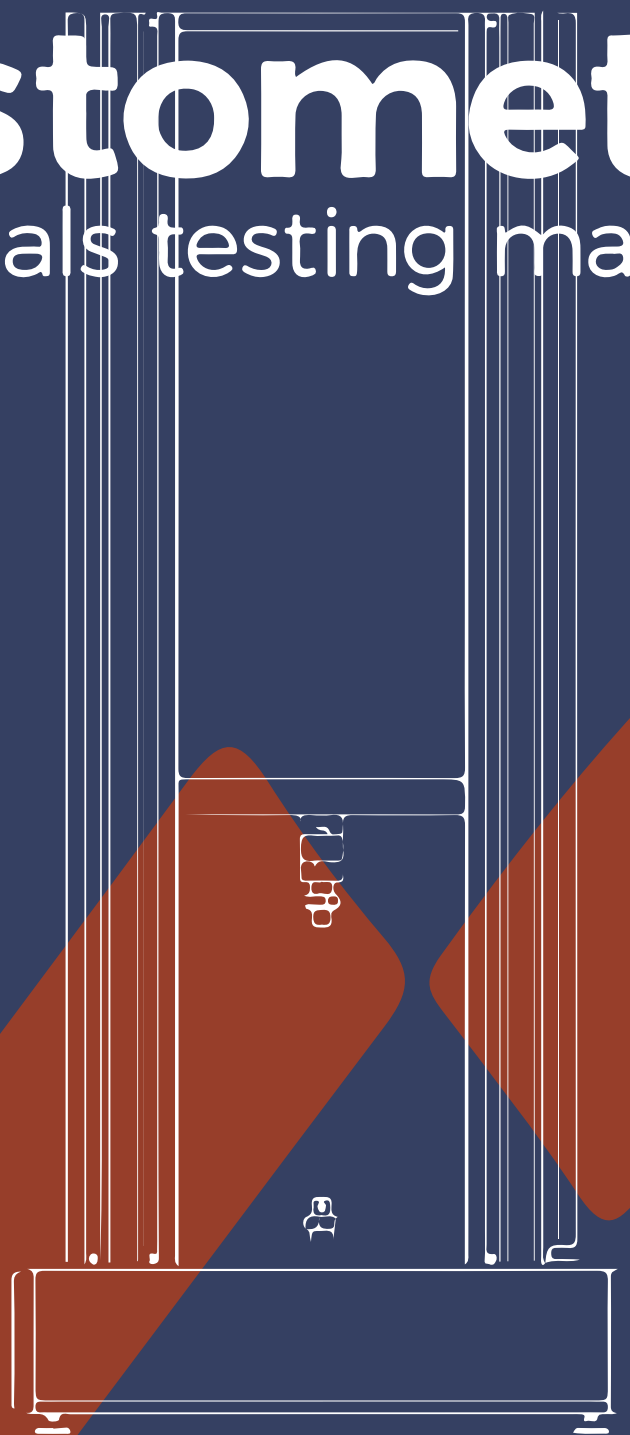


Testometric

materials testing machines



VVC

QUALITÉ CONTROLÉE

Made to measure

.....

Fully digital testing system with high precision control and accuracy, includes automated computer control of test methods giving simplicity of operation

High resolution load cells with accuracies better than +/-0.5% down to 1/1000th of the load cell capacity.

Automatic recognition of load cells and extensometers, with on-device storage of calibration parameters.

Software calibration check facility for instant verification of machine accuracy.

800% overload capability of load cells without damage.

High efficiency pre-loaded self cleaning ballscrews for fast, quiet testing. Fitted with sealed for life lubricated end bearings.

Small footprint design, giving economy of bench space.

Extensive range of grips and fixtures for tension, compression, flexural, shear, peel and product testing etc.

A wide range of contacting and non-contacting extensometers is available including laser and video models.

Crosshead guidance system providing precise alignment and smooth running.

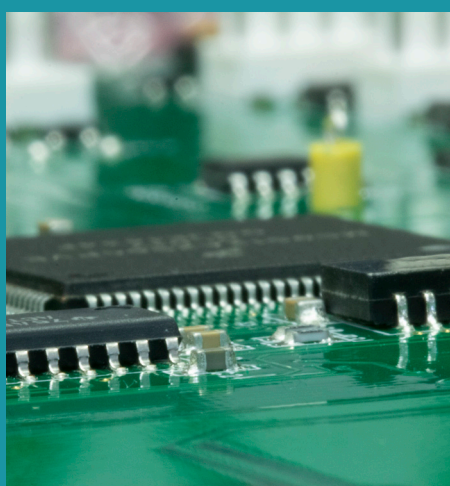
Precision crosshead control via digital AC servo drive and brushless servo motor giving maintenance free operation and 20,000 pulses/rev positional control.

High speed data collection systems for up to 4 synchronous channels.

Expansion channel for additional devices such as extensometers, micrometers, calipers, balances etc.

High stiffness loading frames with solid specialised steel crossheads and rigid extruded support columns with T-slots for accessory mounting.

Overload, overtravel and Telescopic covers giving



High-speed modular electronics



Comprehensive range of extensometry

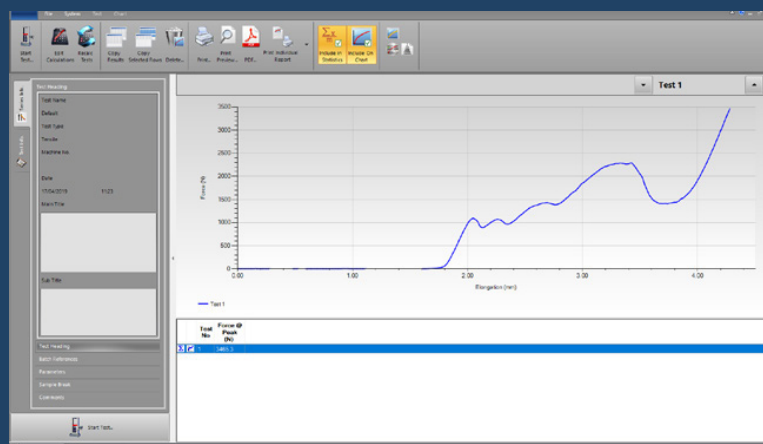
winTest™ Analysis EC

Product - Product - Product - Product - Product

winTest Analysis universal testing software is a fully-integrated and fully-customisable package that supports all industry standards including ISO, ASTM and BS EN specifications.

Test types supported include tensile, compression, flexure, peel, tear, burst, adhesion, shear, spring, cyclic, friction and Brinell hardness. winTest Analysis is very flexible providing simple peak force testing or complex user-defined multistage step testing for specialised testing requirements.

The virtual control panel allows the operator full control of all tester functions and the ability to conduct simple tests manually. The control panel provides easy access to stored test methods, system configuration and diagnostics. The optional Panel PC also features touch screen technology to provide a very efficient and easy-to-use interface.



Key Features

.....

- Intuitive and simple-to-use operation and set-up.
- User-defined machine control routines.
- Configurable trigger points for sample break
- Transfer of test data to Excel, Word and Access



X500-50



Why choose V V C for your Testometric ?

Because at V V C we bring you the machine, the service and the knowledge that is required to handle a testometric the best way.



At VVC our salesmen are here to recommend you the Testometric solution that is best suited for your need



We guarantee the installation of the machine as well as the maintenance of it whenever necessary



VVC Testometrics are COFRAC accredited in order to offer you the best quality calibration service



Essais /
Accréditation n°1-6741

Etalonnage /
Accréditations n°2-6742 et 2-6743

Portées disponibles sur www.cofrac.fr



X100

Testometric

Compact and lightweight Universal Testing Machine with full computer control and precision AC servo drive system. Ideally suited to high-volume, low force testing applications such as paper or packaging materials. Available in both standard and long-travel versions suitable for testing of high-elongation materials.

X100 : 1 / 1LT

Force Capacity kN

1

Accuracy

Better than +/- 0.5% of reading down to 1/1000th of load cell capacity

Crosshead travel mm

420 / 670

Vertical space mm

600 / 850

Position Control Resolution mm

0.0001

Throat depth (force axis to column)

81

Minimum Speed mm/min

0.001

Maximum Speed mm/min

1000

Speed Accuracy

+/-0.1% under stable conditions

Max force at full speed kN

1

Max speed at full load mm/min

1000

Data Acquisition Rate (at PC)

500Hz

X250 : 1 / 2.5 / 3

Force Capacity kN

1 / 2.5 / 3

Accuracy

Better than +/- 0.5% of reading down to 1/1000th of load cell capacity

Crosshead travel mm

630 / 990 / 990

Vertical space mm

800 / 1160 / 1160

Position Control Resolution mm

0.000001

Throat depth (force axis to column)

108

Minimum Speed mm/min

0.00001

Maximum Speed mm/min

2500

Speed Accuracy

+/-0.1% under stable conditions

Max force at full speed kN

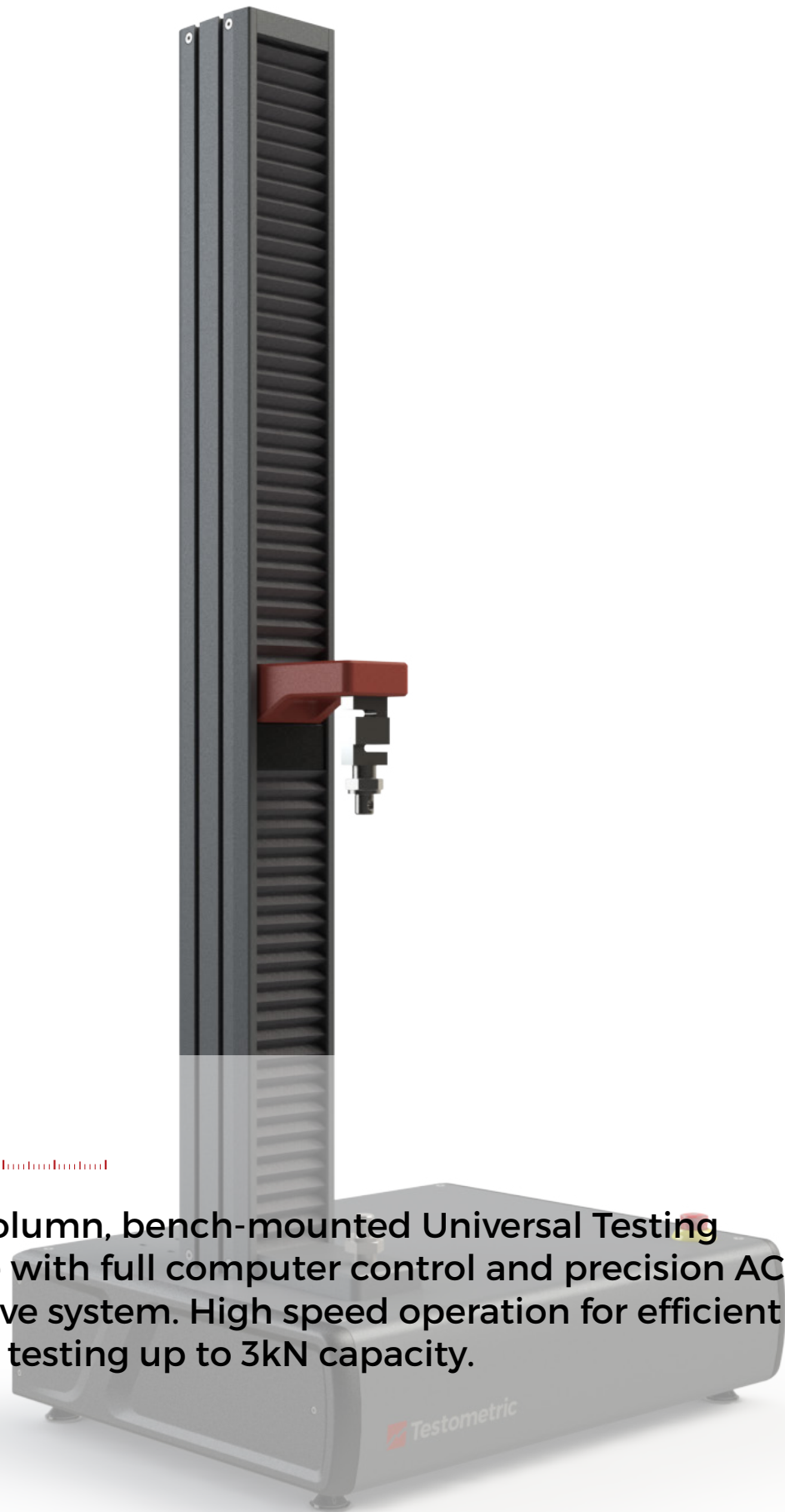
1

Max speed at full load mm/min

2500

Data Acquisition Rate (at PC)

500Hz as standard (optional 1000Hz)



X250

.....

Single column, bench-mounted Universal Testing Machine with full computer control and precision AC servo drive system. High speed operation for efficient material testing up to 3kN capacity.



X350



Dual column, bench-mounted Universal Testing Machine with full computer control and precision AC servo drive system. High speed operation for efficient material testing up to 20kN capacity.

X350 : 5 / 10 / 20

Force Capacity kN

5 / 10 / 20

Accuracy

Better than +/- 0.5% of reading down to 1/1000th of load cell capacity

Crosshead travel mm

1100

Vertical space mm

1275

Position Control Resolution mm

0.000001

Distance Between Columns mm

320 (or 420mm with wide frame option)

Minimum Speed mm/min

0.00001

Maximum Speed mm/min

2000 / 2000 / 1000

Speed Accuracy

+/-0.1% under stable conditions

Max force at full speed kN

5 / 10 / 20

Max speed at full load mm/min

2000 / 2000 / 1000

Data Acquisition Rate (at PC)

500Hz as standard (optional 1000Hz)

X500 : 25 / 30 / 50 / 100

Force Capacity kN

25 / 30 / 50 / 100

Accuracy

Better than +/- 0.5% of reading down to 1/1000th of load cell capacity

Crosshead travel mm

1025 / 1025 / 950 / 1100

Vertical space mm

1225 / 1225 / 1150 / 1300

Position Control Resolution mm

0.000001

Distance Between Columns mm

420 (Wide frame options available)

Minimum Speed mm/min

0.00001

Maximum Speed mm/min

1000 / 1000 / 1000 / 500

Speed Accuracy

+/-0.1% under stable conditions

Max force at full speed kN

25 / 30 / 50 / 100

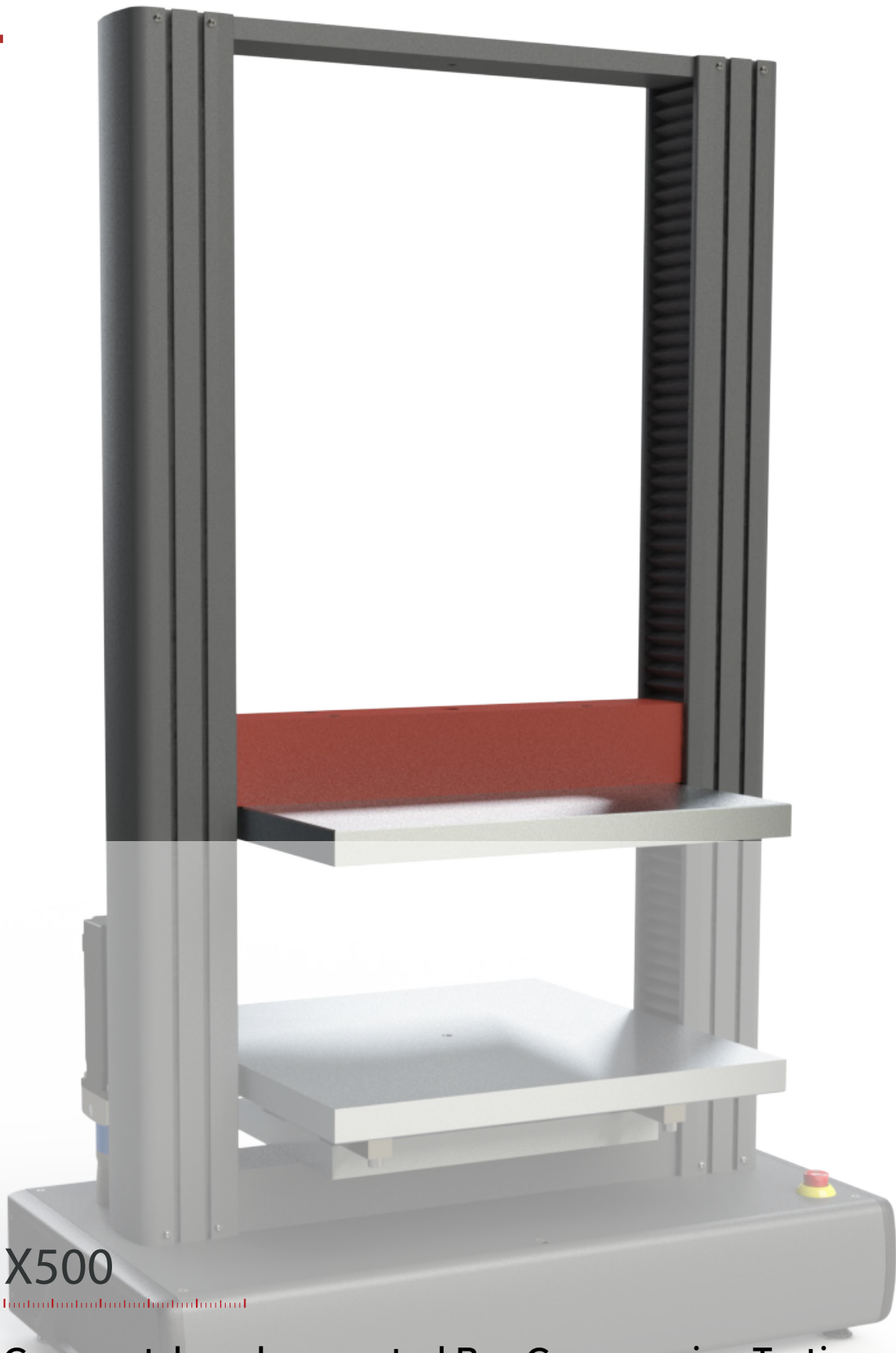
Max speed at full load mm/min

1000 / 1000 / 1000 / 500

Data Acquisition Rate (at PC)

500Hz as standard (optional 1000Hz)

04



X500

XXXXXXXXXXXXXXXXXXXXXXXXXXXX

Compact, bench-mounted Box Compression Testing Machine with full computer control and precision AC servo drive system. Lower platen mounted on 4 balanced load cell for improved accuracy and tolerance of uneven loading.

Contact us :

If you are interested in purchasing a Testometric from V V C, or if you just want more informations, please contact us through one of our platform.



+33 (0)3 20 46 59 66



contact@bancdetraktion.com



V V C Verson Vlies Courcier

www.bancdetraktion.com